

atre ueno

TAX FREE SHOP

Guide to Tax-free Shops

免税店指南 免税店舗紹介 면세 서비스 실시점포 안내

KOKUMIN
[Drug store]

AM7:00-PM10:30



NATURAL BEAUTY BASIC
[Ladies Fashion]

AM10:00-PM9:00



Graniph
[Mens&Ladies&Kids Fashion]

AM10:00-PM9:00



BIRTHDAY BAR
[Gift Shop]

AM11:00-PM9:00



Russet
[Fashion goods]

AM11:00-PM9:00



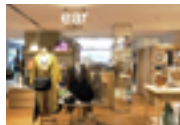
**UNITED ARROWS
GREEN LABEL RELAXING**
[Mens & Ladies Fashion]

AM10:00-PM9:00



ear PAPILLONNER
[Fashion goods]

AM11:00-PM9:00



L'OCCITANE
[Natural Cosmetics]

AM10:00-PM9:00



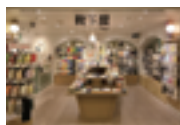
Champ de Herbe
[Cosmetics]

AM10:00-PM9:00



KUTSUSHITAYA
[Socks]

AM10:00-PM9:00



Hard Rock Cafe
[Rock Shop]

[Weekdays] AM10:00-PM11:00
[Weekends & Holidays] AM 9:00-PM11:00



JINS
[Eye Wear]

AM10:00-PM9:00



COLLAGE GALLARDAGALANTE
[Ladies Fashion]

AM11:00-PM9:00



ROPE' PICNIC
[Ladies Fashion]

AM11:00-PM9:00



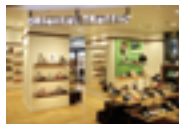
MOTHERHOUSE
[Fashion goods]

AM10:00-PM9:00



ORiental Traffic
[shoes]

AM11:00-PM9:00



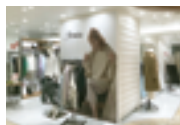
Francais
[Western confectionery]

AM10:00-PM9:00



Jines
[Ladies Fashion]

AM11:00-PM9:00



Three Four Time
[Fashion goods]

AM11:00-PM9:00



atré
U E N O

About the Tax-free Program 免税制度のポイント

Tax-free procedures will be processed at the shop where you purchase the goods and cannot be processed together with goods purchased in other shops.

免税手続は購入したお店で行います。違うお店で購入した商品と併せて免税手続をすることはできません。

General goods

The purchases of ¥5,000 or more excluding tax.
You cannot combine spending with consumables.

税抜5,000円以上の購入。
消耗品の購入金額との合算はできません。

Consumables

The purchases of ¥5,000 or more excluding tax
within ¥500,000.
You cannot combine spending with general goods.

税抜5,000円以上、500,000円以内の購入。
一般物品の購入金額との合算はできません。

退税制度要點指南

請在購買店鋪辦理退稅手續。在其他店鋪購買的商品不能辦理退稅手續。

普通商品

購買5,000日元（稅前）以上。
不可同消耗品的購買金額進行合算。

消耗品

購買5,000日元（稅前）以上，500,000日
元（稅前）以內。
不可同普通商品的購買金額進行合算。

면세제도의 포인트

면세 수속은 구입한 매장에서 실시합니다. 다른 매장에서 구입한 상품과 함께 면세 수속을 할 수 없습니다.

일반물품

5,000엔(세금별도) 이상구매.
소모품 구입 금액과 합산하지 않은
금액입니다.

소모품

5,000엔(세금별도)이상 500,000엔
(세금별도) 이내구매.
일반물품 구입 금액과 합산하지 않은
금액입니다.